

DS-PRP100 Security Radar

DS-PRP100 security radar, which adopts phased array technology, pulse doppler and low-power FMCW modulation technology for intrusion detection. It supports multi-target positioning, tracing and multiple linked cameras tracking. Through intelligent algorithm analysis, it can filter out false alarms under various circumstances. It can work properly day and night in various environments, such as rain, fog, and so on. It is mainly used in the military base, prison, power station, railway, museum, airport and other security places.



Available model

DS-PRP100

Key Features

- Max. 4 trigger lines and 16 zones
- Selectable frequency band
- Links up to 4 separate-mounted speed domes for auto target-tracking
- Multiple radars can link to 1 speed dome
- Up to 4 targets can be tracked by 4 speed domes respectively
- Function of radar-speed dome linkage: mandatory switch of speed dome's tracking target ,speed dome parking action, and field of view display for each speed dome
- Capable to detect ultra-slow movements, squatting movements or creeping
- Displays the distance, direction, and position of the detected object on the client software
- Selectable applications including open mode, shrub mode, and custom mode (with adjustable sensitivity)
- 24/7 all-weather working properly
- Exception alarm: communication failure alarm, anti-moving alarm and tampering alarm



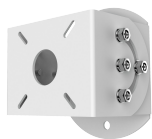
Specifications

Model	DS-PRP100	
Radar module	Detection range	100 m
	Horizontal angle	6.2°
	Vertical angle	17.6°
	Velocity range	-8.8 to 8.8 m/s
	Distance measurement accuracy	1.2 m
	Multi-target capacity	32
	Installation height	Installation height: 1.2m to 4m; Recommended height: 2.5m
	Target detection	Human/vehicle/other
	Frequency	24.05 ~ 24.25 GHz
	Modulation method	FMCW
	Transmission power	20 dbm (Max.)
Alarm input	Trigger line	4
	Zone	8
Interface	Relay output	4-ch output: 5VDC, 0.5 A/125 AVC, 300 mW
	Network interface	802.3at standard PoE network interface, 802.3at standard PoE
Display	Indicator	1 dual-color indicator for device status
Safety	Safety	AES-128 encryption
Protocol	Protocol	Network protocol: HTTP, DNS, NTP, TCP, UDP, DHCP, ARP, SSH Standard ISAPI protocol
Electrical & Battery	Power supply	12 VDC/2 A
	PoE	802.3at standard PoE
	Consumption	≤ 8 W
Other	Working temperature	-40 °C to 65 °C
	Working humidity	10% to 90%
	Material	Front panel: plastics Rear panel: metallic aluminum
	Dimension	228 mm × 206 mm × 61 mm (8.98" × 8.11" × 2.40")
	Weight	1.74 kg
	IP level	IP67
	IK level	IK09
	Anti-corrosive level	NEMA 4X

Approval

Class	Standard	Approval
Radar	EN300 440	✓
EMC	EN 50130-4	✓
	EN 55032	✓
	EN61000-3-2	✓
	EN61000-3-3	✓
RED	ETSI EN 301 489-1	✓
	ETSI EN 301 489-3	✓
	ETSI EN 300 440	✓
	EN 62311	✓
	EN 60950-1	✓
Other	IEC/EN 60529	IP67
	IEC/EN 62262	IK09
	ROHS/REACH/WEEE	✓
	FCC	✓
	CB	✓
	RCM	✓
	NEMA 4X	✓

Accessories



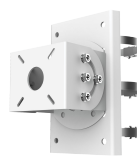
DS-PRB-1110



DS-PRB-1120



DS-PRB-1200



DS-PRB-1310



DS-PRB-2200



BAINISYS

117/8, Changwatthana 10, LakSi, Bangkok 10210

Phone : (66 2) 094-0800

E-mail : sale@bainisys.com

Line Chat : @Bainisys

