

DS-PRI120 Security Radar

DS-PRI120 security radar, which adopts phased array technology, pulse doppler and low-power FMCW modulation technology for intrusion detection. It supports multi-target positioning, tracing and multiple linked cameras tracking. Through intelligent algorithm analysis, it can filter out false alarms under various circumstances. It can work properly day and night in various environments, such as rain, fog, and so on. It is mainly used in the military base, prison, power station, railway, museum, airport and other security places.



Key Features

- Max. 4 trigger lines and 16 zones
- Selectable frequency band
- Links up to 4 separate-mounted speed domes for auto target-tracking
- Multiple radars can link to 1 speed dome
- Up to 4 targets can be tracked by 4 speed domes respectively
- Function of radar-speed dome linkage: mandatory switch of speed dome tracking target ,speed dome parking action, and field of view display for each speed dome
- Capable to detect ultra-slow movements, squatting movements or creeping
- Displays the distance, direction, and position of the detected object on the client software
- Selectable applications including open mode, shrub mode, and custom mode (with adjustable sensitivity)
- 24/7 all-weather working properly
- Exception alarm: communication failure alarm, anti-moving alarm and tampering alarm

Available model

DS-PRI120



Approval

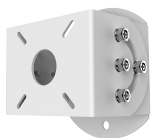
Class	Standard	Approval
Radars	EN300 440	√
EMC	EN 50130-4	√
	EN 55032	√
	EN 55024	√
	EN61000-3-2	√
	EN61000-3-3	√
RED	ETSI EN 301 489-1	√
	ETSI EN 301 489-3	√
	ETSI EN 300 440	√
	EN 62311	√
	EN 60950-1	√
Other	IEC/EN 60529	IP67
	IEC/EN 62262	IK09
	ROHS/REACH/WEEE	√
	FCC	√
	CB	√
	RCM	√
	NEMA 4X	√

Specifications

Model	DS-PRI120	
Detection	Modulation	Frequency Modulated Continuous Wave
	Detection range	Human: 120 m Vehicle: 150 m
	Horizontal angle	120°
	Vertical angle	26°
	Range measurement accuracy	± 1.5 m
	Angle measurement accuracy	± 1°
	Velocity range	- 9.8 o + 9.8 m/s
	Max. target number	64
	Frequency	24.050~24.250 GHz
	Transmission power	< 20 dBm (100mW)
Alarm input	Zone	16
	Trigger Line	4

Alarm output	Relay output NO/NC	3-channel : Max. 1 A/30 VDC 1-channel : Max. 10 A/28 VDC
Application & Protocol	Protocol	Network protocol: HTTP, DNS, NTP, TCP, UDP, DHCP, ARP, SSH Standard ISAPI protocol
Electrical & Battery	Consumption	< 8 W
	PoE	802.3at standard PoE
	Power supply	12 VDC
Interface & Component	Network interface	802.3at standard PoE
	Power interface	802.3at standard PoE or 12 VDC
	Reset button	1
	Indicator	1 dual-color indicator: work status
	Tamper switch	1, front panel tamper-proof
Others	Operation temperature	-40 °C to 65 °C (-40 °F to 149 °F)
	Operation humidity	10% to 90%
	Dimension (W × H × D)	206 mm × 228 mm × 61 mm (8.11" × 8.98" × 2.40")
	IP level	IP67
	IK level	IK09
	Anti-corrosive level	NEMA 4X
	Weight	1.9 kg (4.2 lb)
Material	Front panel: PC+IBS Rear panel: metallic aluminum	
Model	DS-PR120	
	Color	White
Installation	Installation	Installation height: 2 m to 3 m (78.7 " to 118.1 ") (Recommended: 2.5 m (98.4 "))

Accessories



DS-PRB-1110



DS-PRB-1120



DS-PRB-1200



DS-PRB-1310



DS-PRB-2200

